

# GPS Tracker Professional Manufacture



# CONTENTS

<b>01. About us</b> .....	<b>01-06</b>
Company profiles	
Our Advantage For Customer	
Product produce Line	
<b>02. Product Introduction</b> .....	<b>07-18</b>
2G 4Pin GPS For Car Truck Motorcycle -----	JX01
2G 8Pin GPS With SOS For Car Truck Motor-----	JX02
2G Relay GPS Tracker For Car Motorcycle -----	JX03
2G Car Charger tracker For Car -----	JX04
4G 4Pin GPS For Car Motorcycle Truck -----	JX05
2G OBD GPS Tracker For Car -----	JX06
4G OBD GPS Tracker For Car -----	JX07
4G Rechargeable Wireless For Asset -----	JX08
4G Wireless GPS Tracker For Asset Truck-----	JX09
4G Pet GPS For Dog &Cats -----	JX10
GPS with Fuel Level Sensor For Tank -----	JX11
GPS With Ultrasonic Fuel Sensor -----	JX12
Tracking Platform -----	JX13
<b>03. Industry Solutions</b> .....	<b>19-28</b>
Rental vehicle solutions	
Private ride solutions	
Commercial freight vehicle solutions	
Public Ride Solutions	
Personal location tracking & item anti-theft tracking solution	
Taxi monitoring and management system solution	

# Company Introduce

JinXinYunDa (ShenZhen) Technology Co.,Ltd. Is one of professional manufacturing of Vehicle electrical products in ShenZhen

The main prouct :2G/ 4G wired GPS Tracker , 2G /4G Wireless GPS Tracker ,OBd GPS Tracker ,Kids /Pet GPS Tracker, Fuel Sensor Remote Monitor Solution and Fleet Management Tracking Platform

Quality is our Sincerest repect offered to our customers all over the world; “Profession Makes Perfect, Price creats Mutual Benefit” is our business Ethis. We have 25 experienced R&D engineers and technicans ,who always keep improving and developing new products to meet clients requirements , So welcome the customized order.

Our products have a good market in America, Europe, Middle-East, Asia and Africa. We sincerely welcome friends around the work to visit our factory; and work with us on base of long term mutual benefits.

## Welcome OEM & ODM Cooperation From You



Purchasing Department



R&D Department



Development Department

## Business Advantage»

Professional Hardware and Software Engineers Team ,can OEM & ODM service

Strict quality control (0.3% lower defective rate)

We can supply a whole series of products from low-end to high-end, with diversified functions



All our products have strict quality control system, and products have passed CE, FCC & ROHS.

Professional after-sales service (12 month warranty) we can provide professional and timely service.

Have a series of products (15k export around 15000 pcs per month in more than 60 countries)

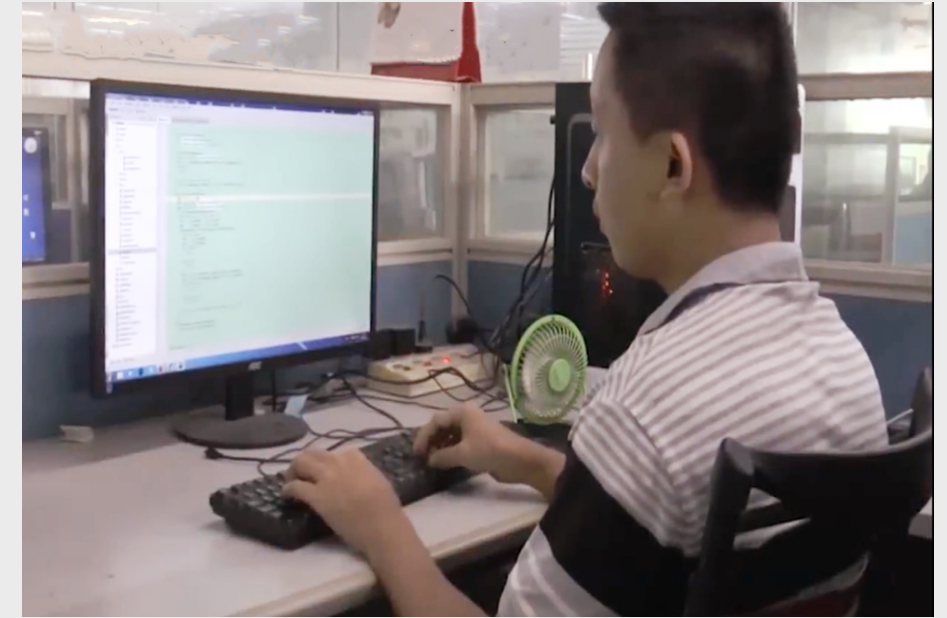
# Our Engineers Team



Engineers Meeting For Project



Hardware Engineer Design Circuit



Software Engineer Adjust Programming

## GPS Production Process





JX01

2G Wired GPS Tracker



JX03

4G Wired GPS Tracker



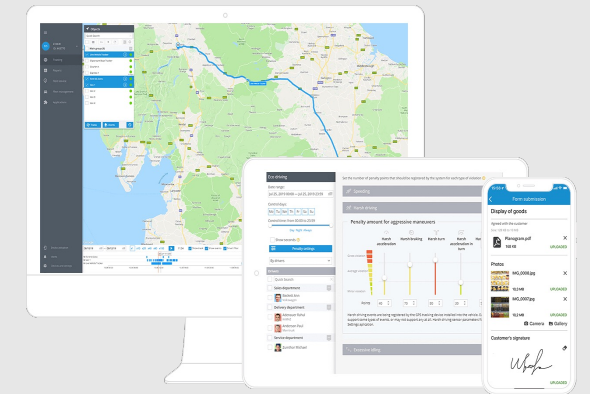
JX04

Car Charger



JX08/JX09

Wireless GPS Tracker



JX13

GPS Fleet Management System



JX05



JX06/JX07

OBD GPS Tracker



JX10

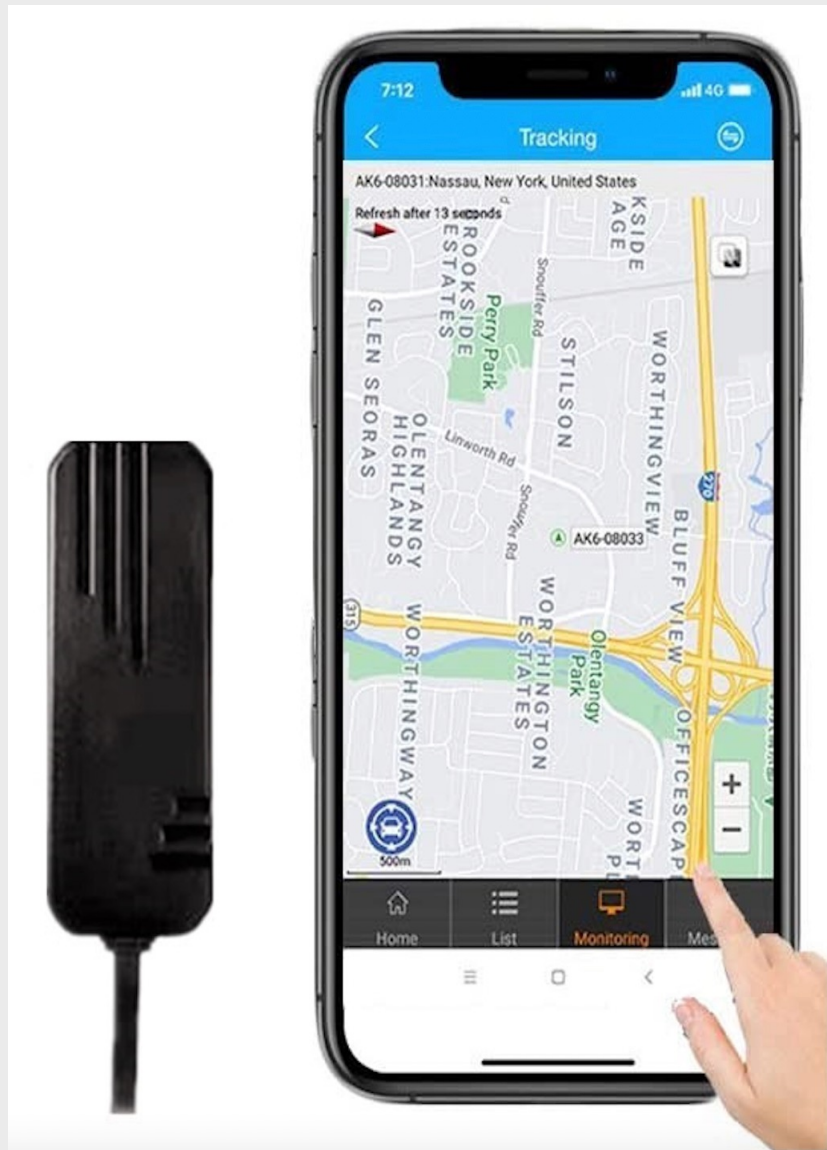
Pet GPS Tracker



JX12

Remote Monitor Fuel Solution

## VEHICLE GPS/GPRS HARDWARE:



JX01 is a vehicle GPS tracker with GPS and GSM/GPRS communication which is able to monitor vehicle location and remote control via GSM/GPRS network. With its intelligent event control engine, users can define various combinations of vehicle conditions and generate various actions to meet their unique requirements.

### Features

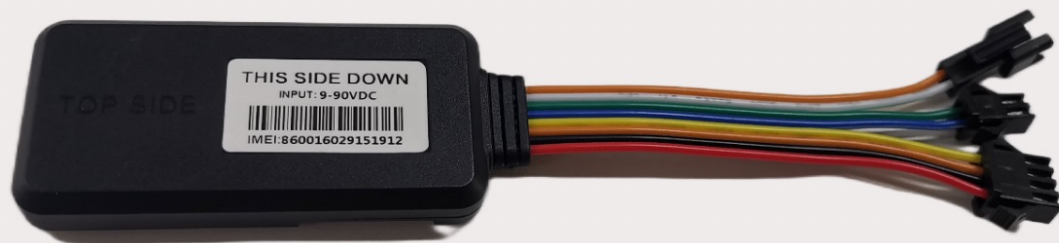
- Small and easy installation
- Data communication by SMS/TCP
- High accuracy GPS positioning
- GSM jamming detection
- Built-in G-sensor
- FOTA firmware upgrade using FTP
- Configurable Real Time Tracking & Logging
- Intelligent event control engine
- Multiple alarm :low power alarm ,geo-fence alarm
- Roaming preference settings
- Configurable power management
- Over-Speed Alarm
- The route history playback

## VEHICLE GPS/GPRS HARDWARE:

JX02 is a vehicle GPS tracker with SOS and microphone ,which is able to monitor vehicle location and remote control via GSM/GPRS network. With its intelligent event control engine, users can define various combinations of vehicle conditions and generate various actions to meet their unique requirements.

### Features

- Small and easy installation
- Real time tracking and remote monitor
- High accuracy GPS positioning
- SOS alarm
- Remote voice monitor
- Over –speed alarm
- Intelligent event control engine
- Multiple alarm :low power alarm ,geo-fence alarm
- Roaming preference settings
- Configurable power management
- Over-Speed Alarm
- The route history playback



## VEHICLE GPS/GPRS HARDWARE:



JX03 is relay GPS tracker which is able to remote engine cutoff and real time. With its intelligent event control engine, users can define various combinations of vehicle conditions and generate various actions to meet their unique requirements. Especial for Cars and Motorcycle

### Features

- Small Size ,easy to install
- BD+GPS+LBS Positioning way
- Real time positioning
- Remote engine shutdown;
- Anti-lost alarm:Vibration alarm/main power cutoff /Geo Fence/ overspeed alarm
- Blind Area Supplement;
- SMS/APP/Web inquiring
- 180 days history playback

## VEHICLE GPS/GPRS HARDWARE:



JX04 is car charger GPS tracker for remote monitor and real time tracking ,which have 2 UBS ports ,user can use it for charging .besides it's not easy to consider as gps tracker

### Features

- BD+GPS+LBS Positioning way
- Real time positioning
- Fast charge;
- Anti-lost alarm:Vibration alarm/main power cutoff /Geo Fence/ overspeed alarm
- SMS/APP/Web inquiring
- 180 days history playback

# VEHICLE GPS/GPRS HARDWARE: Model : JX05



## ProductDetails »

Working voltage: +10.0~+90VDC	Receiving ways: 56 channels
Size of the main unit: 65.0*26.3*13.0 (mm)	Working frequencies : 1575.42Mhz C/A (GPS)
Weight of the main unit: 22g	Receiving sensibility : -162dBm
Body color: black	Positioning accuracy: ≤10m (wide-open area)
working temperature: -20~85°C	speed accuracy: ≤0.2M/S (wide-open area)
Humidit: 0~95%	Positioning mode: Auto 2D/3D
G S M frequencies: Quad-band: 850MHz/900MHz/ 1800MHz/1900MHz	Hot start: 1 sec., average
GPS chip: U-blox 7 chipset	Warm start: 2 sec., average
	Cold start: 40 sec., average

## Application industry »



## Related accessories »



Main unit



Relay



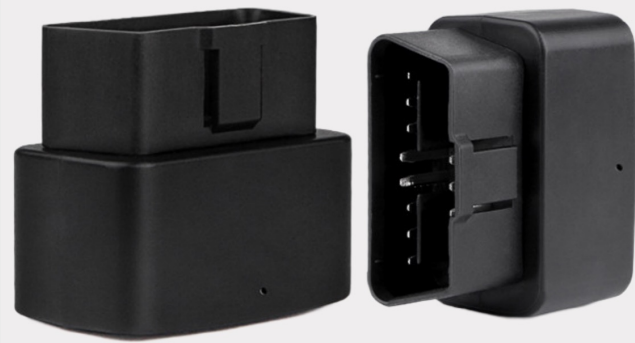
Wire Cable



## Main selling point

- ▶ Smart engine ON/OFF status detection without A C C connection
- ▶ Extreme power save
- ▶ design U S B parameter
- ▶ configuration Detection on
- ▶ vehicle voltage
- ▶ A G P S function with fast G P S positioning
- ▶ Tiny size like a lighter
- ▶ Data logger to store 1800 offline waypoints

## VEHICLE GPS/GPRS HARDWARE:



### Product Details »

OBD GPS tracker Is for remote monitor and real time tracking ,it have 2G & 4G Vesion ,besides have the normal vesion and diagnosis vesion ,mainly used for kinds of car fleet mangement ,anti-lost alarm and remote voice monitor and so on

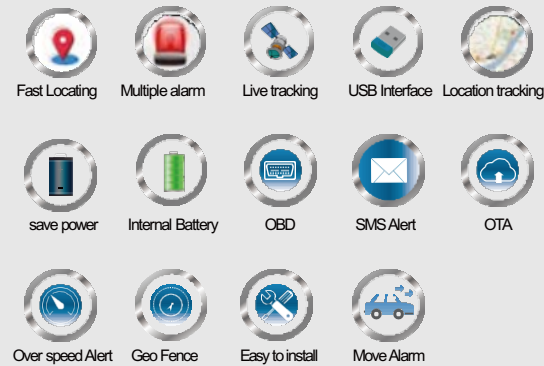
## Application industry



### Main selling point »

- ▶ Smart engine ON/OFF status detection without ACC connection.
- ▶ Extreme power save design.
- ▶ USB parameter configuration.
- ▶ Detection on vehicle voltage & backup battery's volume.
- ▶ A GPS function with fast GPS positioning.
- ▶ Support RFID & wireless immobilizer.
- ▶ Plug & play design with OBD connector, anti-tamper design.
- ▶ Trace optimization when vehicles turns a corner.

# VEHICLE GPS/GPRS HARDWARE:



## Main selling point >>

- >> Plug-n-play with OBD connector, free install.
- >> Smart engine ON/OFF detection.
- >> Accurate odometer&speed reading directly via CANBUS.
- >> Read error code/Remote diagnostic function.
- >> OTA function, upgrade firmware on air.
- >> Turnover alarm when the vehicle falls down accidentally.
- >> Acceleration and crash alarm(deceleration).
- >> Trailer alarm.
- >> Read remaining fuel level (only for some cars).

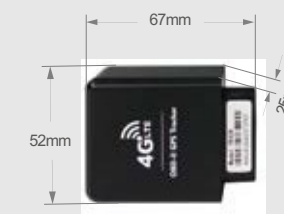
## Product Details >>

Working voltage: +10.0~+60VDC	Receiving ways: 56 channels
Size of the main unit: 54.0*51.5*28.5 (mm)	Working frequencies : 1575.42Mhz C/A (GPS)
Weight of the main unit: 73g	Receiving sensibility : -162dBm
Body color: black	Positioning accuracy: ≤10m(wide-open area)
working temperature: -20~85°C	speed accuracy: ≤0.2M/S(wide-open area)
Humidit: 0~95%	Positioning mode: Auto 2D/3D
G S M frequencies: Quad-band:850MHz/900MHz/ 1800MHz/1900MHz	Hot start: 1 sec., average
GPS chip: U-blox 7 chipset	Warm start: 2 sec., average
	Cold start: 40 sec., average

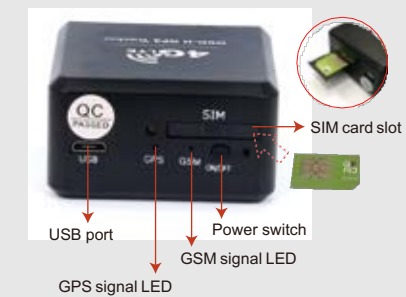
## Application industry >>



## Specification >>



## Installation Guide For 4G LTE OBDII GPS Tracker JX07 >>



## Related accessories >>



## VEHICLE GPS/GPRS HARDWARE:



JX08 3years No-chargeable standby 4G wireless GPS Tracker with Plug and play battery for Assets ,Truck Container and so on .User can remote monitor vehicle by GPS satellite positioning system, It plays a significant role in logistics and cold chain &transportation, helping customers to achieve transparent management, reduce costs, ensure safety, and improve efficiency

### Features

- Plug and play battery ,user can exchange battery when use out
- BD+GPS+LBS Positioning way
- Real time positioning
- Low power alarm /Geo-fence alarm/Light sensor alarm
- SMS/APP/Web inquiring
- 180 days history playback

### Hot Selling Point

<p>Plug and play Battery Easy to exchange</p>	<p>Easy installation</p>	<p>Motion Sensor</p>
<p>Low power consumption</p>	<p>Non-rechargeable 8100mah battery</p>	<p>Over 3 years battery life</p>

## VEHICLE GPS/GPRS HARDWARE:

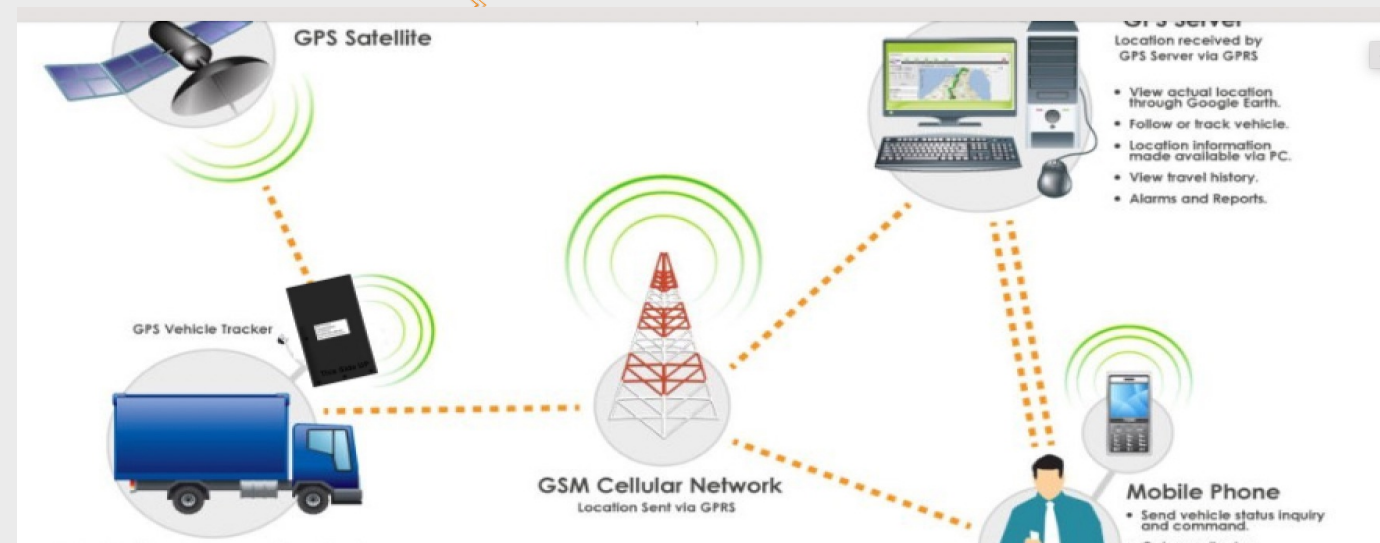


JX09 GPS Tracker with 4G LTE GPRS communication and Internet for Vehicle, user can remote monitor vehicle by GPS satellite positioning system, It plays a significant role in logistics and cold chain & transportation, helping customers to achieve transparent management, reduce costs, ensure safety, and improve efficiency

### Features

- Track on command or by time interval or by clock
- Strong magnetic for easy installation
- 7000mA back-up battery and re-chargable
- Check the location directly by the Google map's URL , APP and Web
- Battery low-level alarm
- OTA function, upgrade firmware on air
- Plug & play install Immobilizer to protect car

### How Gps Vehicle Tracking System Works?



## VEHICLE GPS/GPRS HARDWARE:



### Features

- Plug and play battery ,user can exchange battery when use out
- BD+GPS+LBS Positioning way
- Real time positioning
- Low power alarm /Geo-fence alarm/Light sensor alarm
- SMS/APP/Web inquiring
- 180 days history playback

JX10 pet gps tracker is specially for small animal ,such like dogs and cats ,the devices with 4G full global band ,can use any countries .With it ,user can remote monitor real time tracking their pet any time and place .It's the best product for pet anti-lost and tracking

### Specification

Battery capacity	800 mA
Charging duration	Approximately 2.5 H
Operating voltage	DC 3.4 V-4. 2V
Operating	-30 °C-75 °C
Storage	-30 °C-80 °C
Working humidity	5%-95%
Power during	Average 65mA
Sleep power	Average 3mA
Communication module	A7670G (B1/B2/B3/B4/B5/B7/B8/B12/B13/B18/B20/B26/B28/B66/LTE-TDD B34/B38/B39/B40/B41 GSM/GPRS/EDGE 850/900/1800/1900
Communication	4G + 2G
GPS chip:	AT6558R
GPS cold start time	Average 32 seconds
GPS hot start time	Average 1 second
GPS sensitivity	-162DBM
G-sensor	Triaxial acceleration sensor
GPS antenna	Ceramic antenna
Positioning mode	GPS + BDS + LBS + WiFi
SIM card holder	Nano SIM Lift Cover Receptacle (Miniature)
Work indicator light	Red (charging lamp) Blue (GPS Status Light) Yellow (GSM)
Charging mode	Magnetic charging
Waterproof grade	IP68
Switch on and off	There are on/off keys and metal keys

## VEHICLE GPS/GPRS HARDWARE:

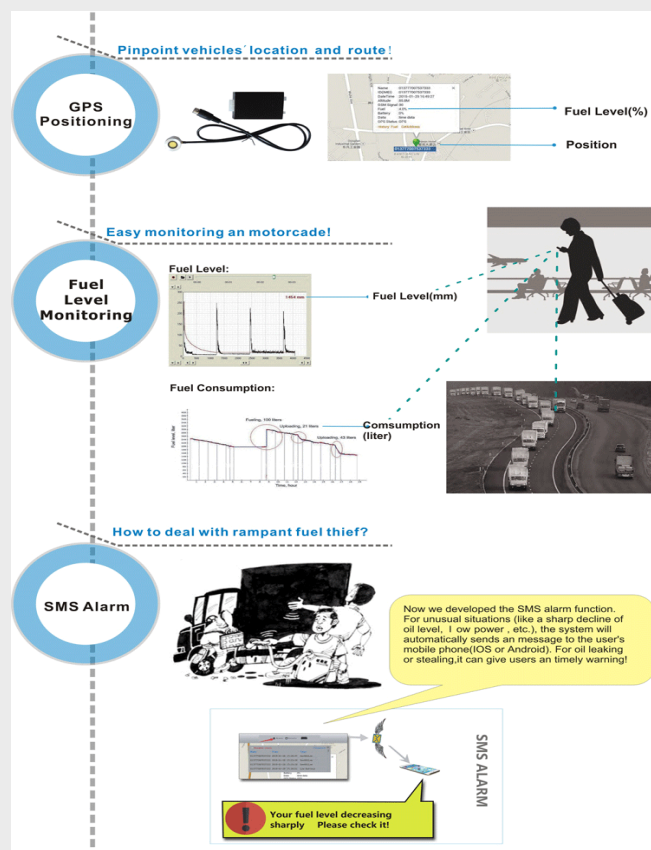


JX11 real-time measuring of the fuel level inside fuel tanks is mainly used to prevent fuel theft from inside the fuel tank. Using correct calibration, very good estimated fuel consumption can be achieved. Considering all the industries and vehicles equipped with fuel level sensors, the customers report in average 23% savings with fuel after implementing the GPS solution with fuel level sensors.

### Specification

- Pressure range: -0.1Mpa ~ 0.1Mpa
- Ambient temperature: -40~85° C
- Detection range: 100~1000mm
- Resolution: 0.01mm
- Measuring accuracy: 0.1%
- Measurement maximum error: 2mm
- Extreme temperature resistance: -50~150° C
- Probe diameter: Φ16
- Power supply: DC9 ~ 38V
- Fixed mode: threaded installation M20×1.5 or flange installation, special specifications can be customized according to requirements

### How does it working ?



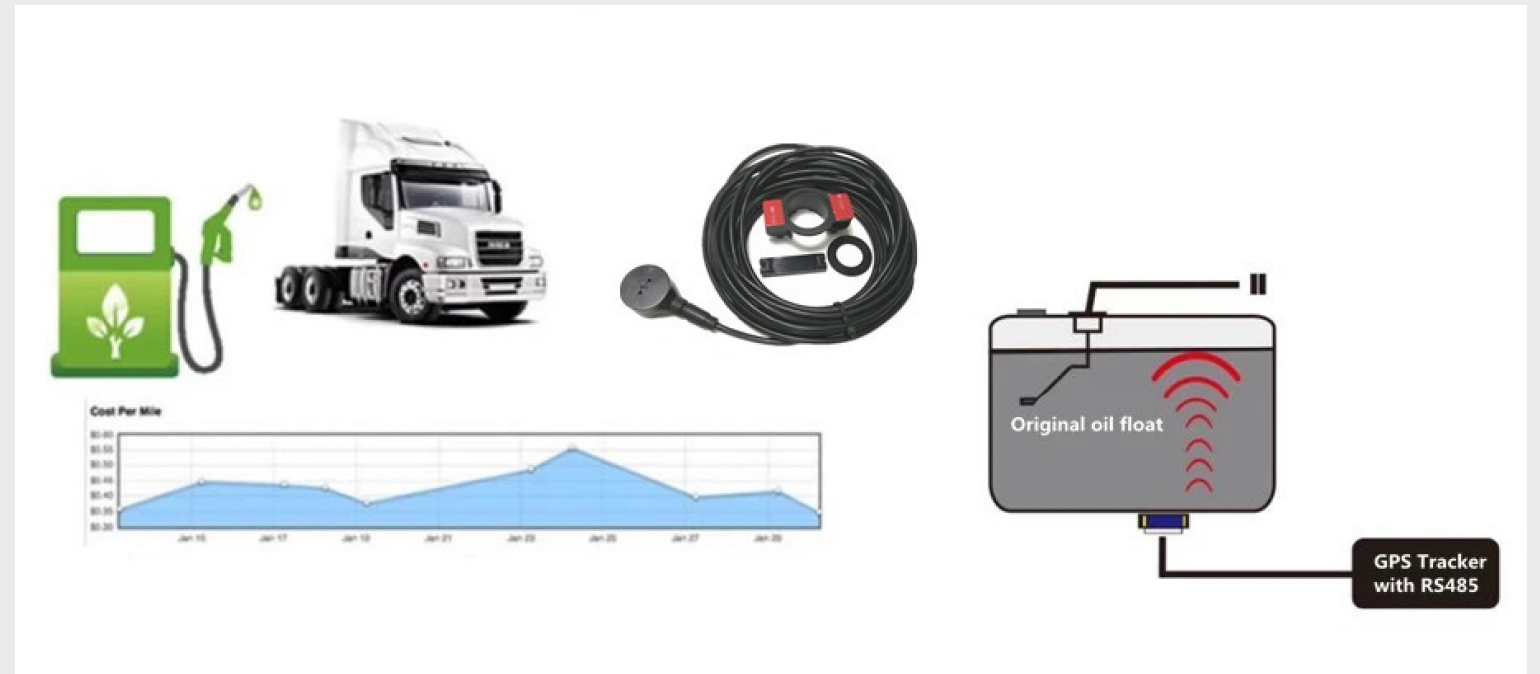
### Feature

1. Remote monitor the fuel and driver behavior
2. High accurate for fuel level
3. Multiple alarm :anti-theft alarm for gps and fuel
4. 180days history playback
5. Easy fleet management for truck

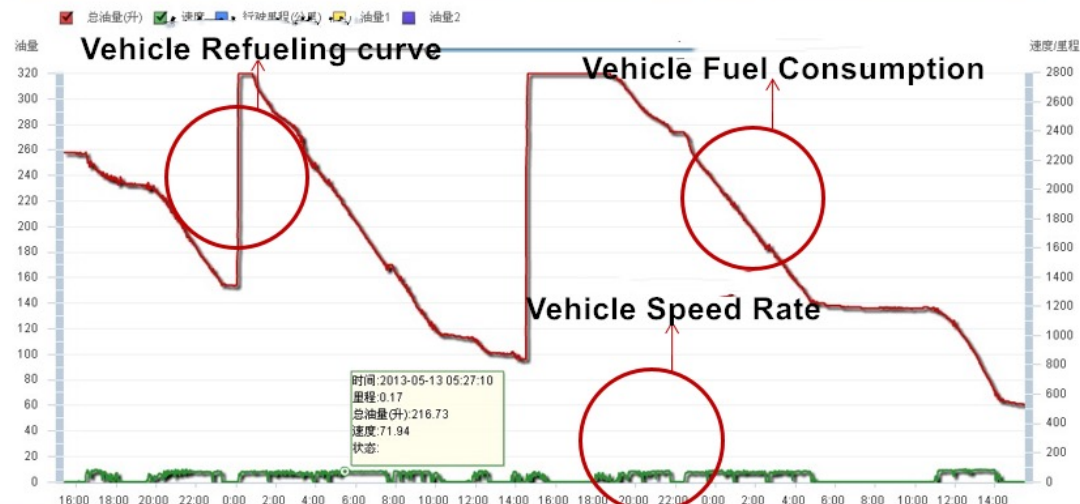
## VEHICLE GPS/GPRS HARDWARE:



JX12 Ultrasonic fuel level sensor is a vehicle fuel monitoring device which is designed for the fuel management needs of company fleet. This sensor can be used to prevent the driver to steal fuel, optimize the operating costs, optimize the driver's driving behavior and auxiliary statistical decision, etc. The sensor is equipped with a high precision ultrasonic probe, which can detect the fuel quantity in the fuel tank. Fuel quantity data will be sent to the server via GPS tracker, then generate the data report. Sensor support for serial output, so, it can easily docking with other system.



## Fuel Data Report



## Feature

- High accuracy
- Excellent stability
- Easy installment and maintenance
- No pollution and lower consumption
- High reliability
- Widely used for trailers, taxis, buses, concrete mixer truck, engineering machinery, sanitation trucks and other.

## VEHICLE GPS/GPRS SOFTWARE:

JX12 platform is a web based hosted software platform for object location tracking and monitoring. It can be accessed from anywhere in the world and it is hosted in professional data centers.

### Feature

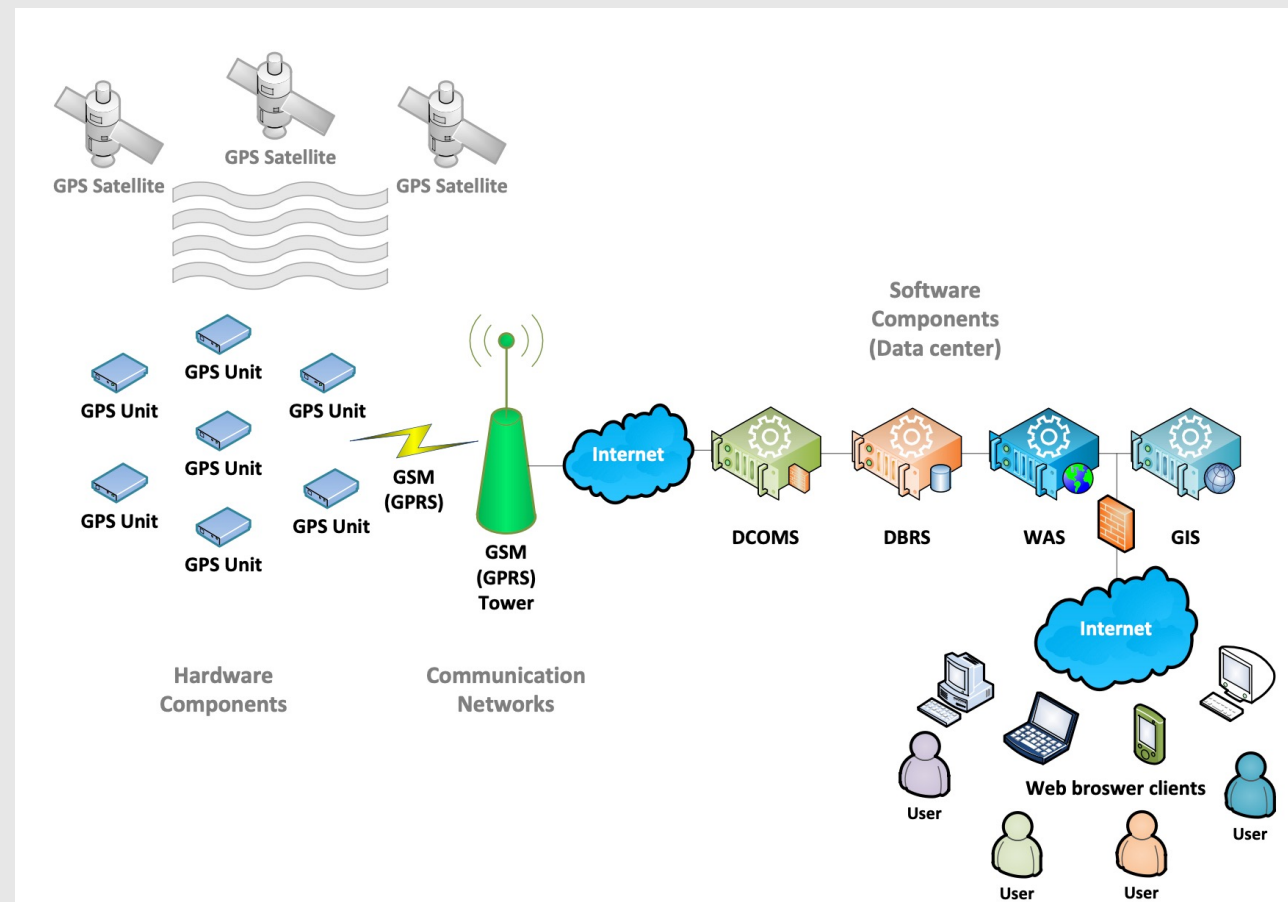
- User friendly and fast web interface
- Real time communications
- Optimized data traffic
- Data safety and security
- Advanced data analysis, statistical processing and reporting
- Global maps coverage
- Custom map data integration possible
- Alerts via SMS or E-mail for special events

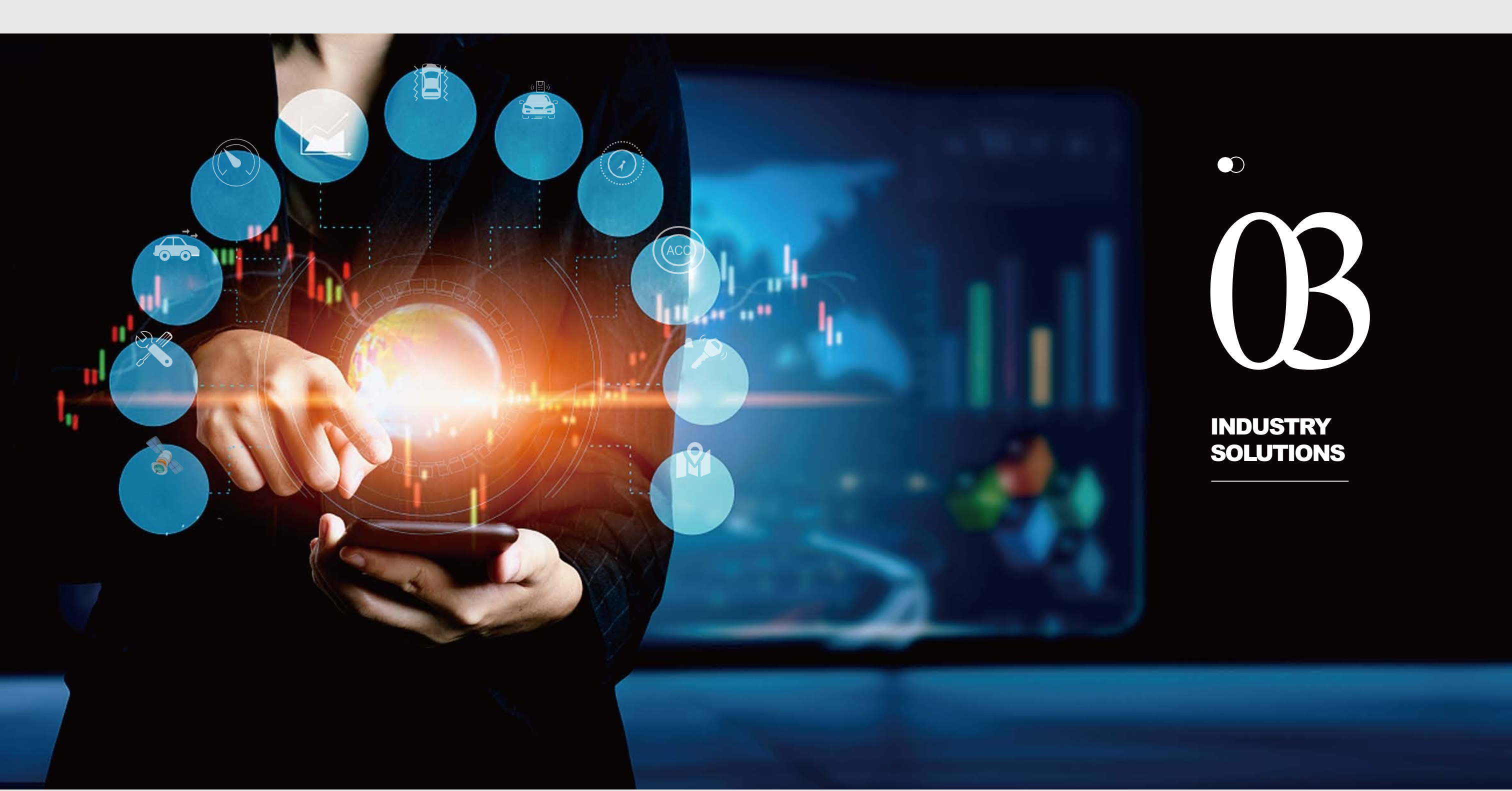
### Applications

- Transport fleet tracking and management
- Taxi, rent a car
- Emergency and security services
- Fire, ambulance
- Police, security firms
- High-value transports
- Personal vehicles
- People (child, senior) tracking



### How does it work ?





03

**INDUSTRY  
SOLUTIONS**

---

# Car vehicle rental solution »

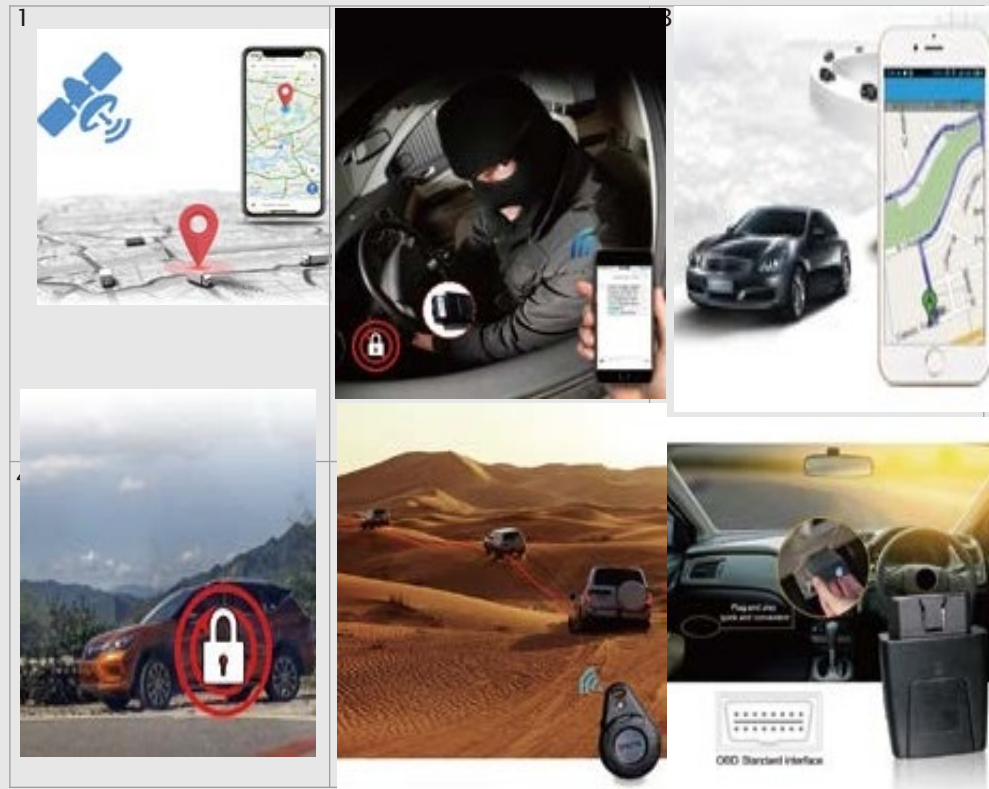
During the lease period, there will happen such as:

Car fraud, Overdue return, Uncollectible rent Driving beyond the agreed scope



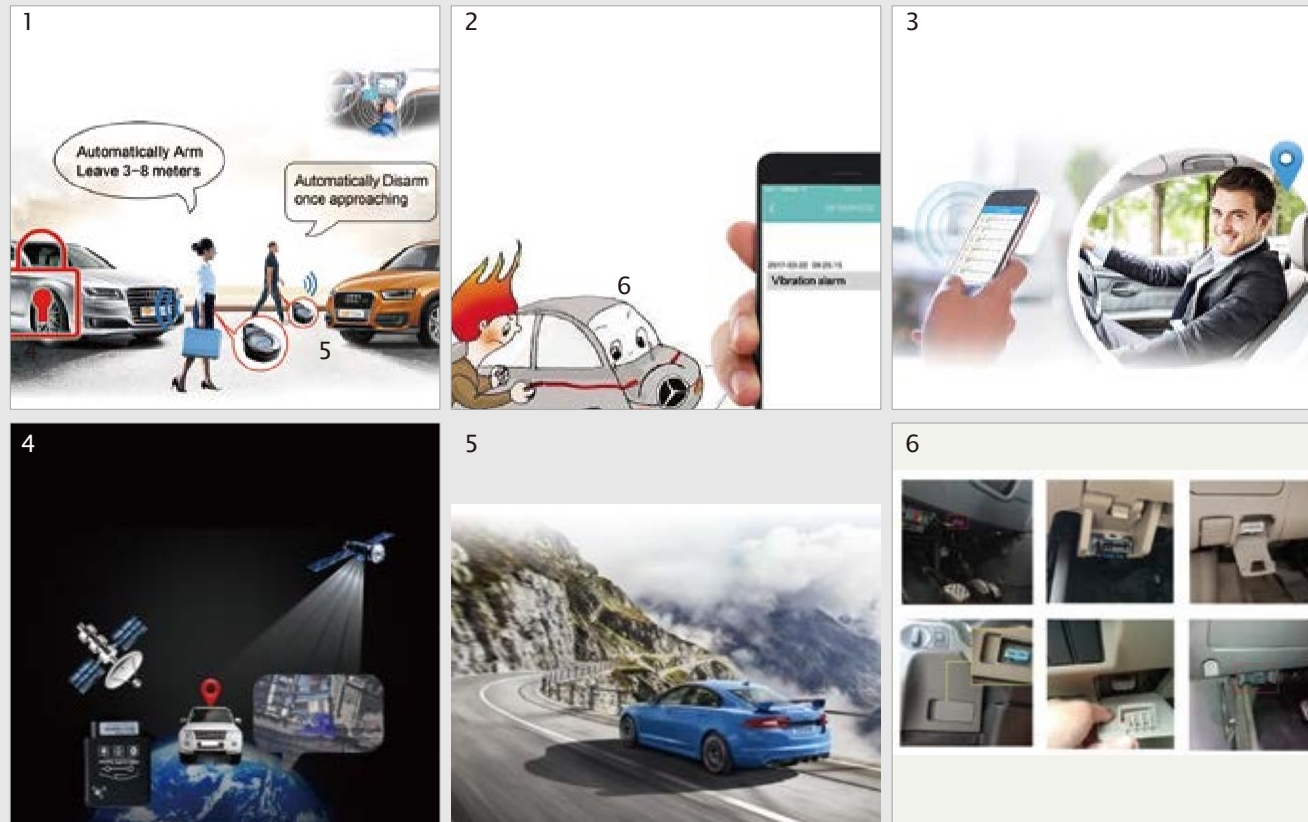
## Solutions&Benifits ▶

1. 24-hour realtime tracking& monitoring any time.
2. Prevent device from being removed/destroyed, with anti-tamper design.
3. the person getting lost can be traced and found by playing history playback.
4. Geo-fence can limit the car in a specific area, with geo-fence alarm if moves out that area.
5. Remote lock the car to prevent normal use if its overdue;
6. with directly install play-n-plug OBD port.



## Private ride solutions »





- 1.Support 2.4G RFID tag auto arm/disarm.
- 2.When triggering the alarm,tracker will call back & send sms to the monitoring number;Or send the alarm to the App or platform, and car will be stopped safety.
- 3.Remote monitoring.
- 4.AGPS function with fast GPS
- 5.Trace optimization.
6. Plug & play design with OBD connector, easy to install; anti- -tamper.

Optional models for you »

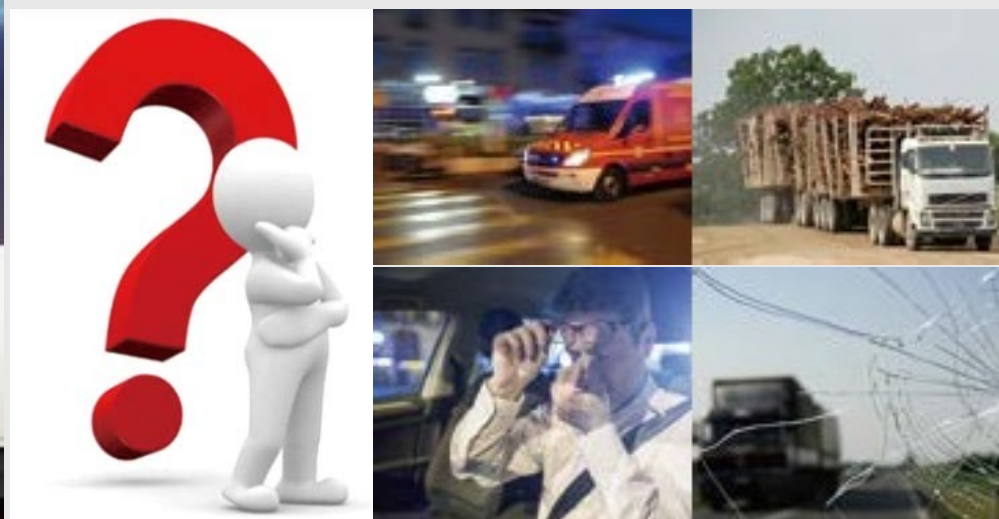


# Commercial freight vehicle solutions



Are you still worried about fleet management?

Look at the solutions we have customized for you.  
Pain points: speeding, overloading, rapid acceleration, rapid deceleration, fatigue driving, stealing oil, accident



**Precise control of oil volume and temperature**

Supports oil and temperature sensors to monitor your fuel consumption and temperature



**Say NO to overload**

The TK510 can support the weight sensor and will alarm if it is overweight. Need customization



**Precise control of oil volume and temperature**

Supports oil and temperature sensors to monitor your fuel consumption and temperature



**Say NO to overload**

The TK510 can support the weight sensor and will alarm if it is overweight. Need customization



**Strict control of driving time**

If the pre-set driving time is exceeded, the Fatigue driving alarm is triggered, the siren will sound to warn the driver.



**Know the accident in time**

In the event of a violent collision, a Crash alarm is triggered

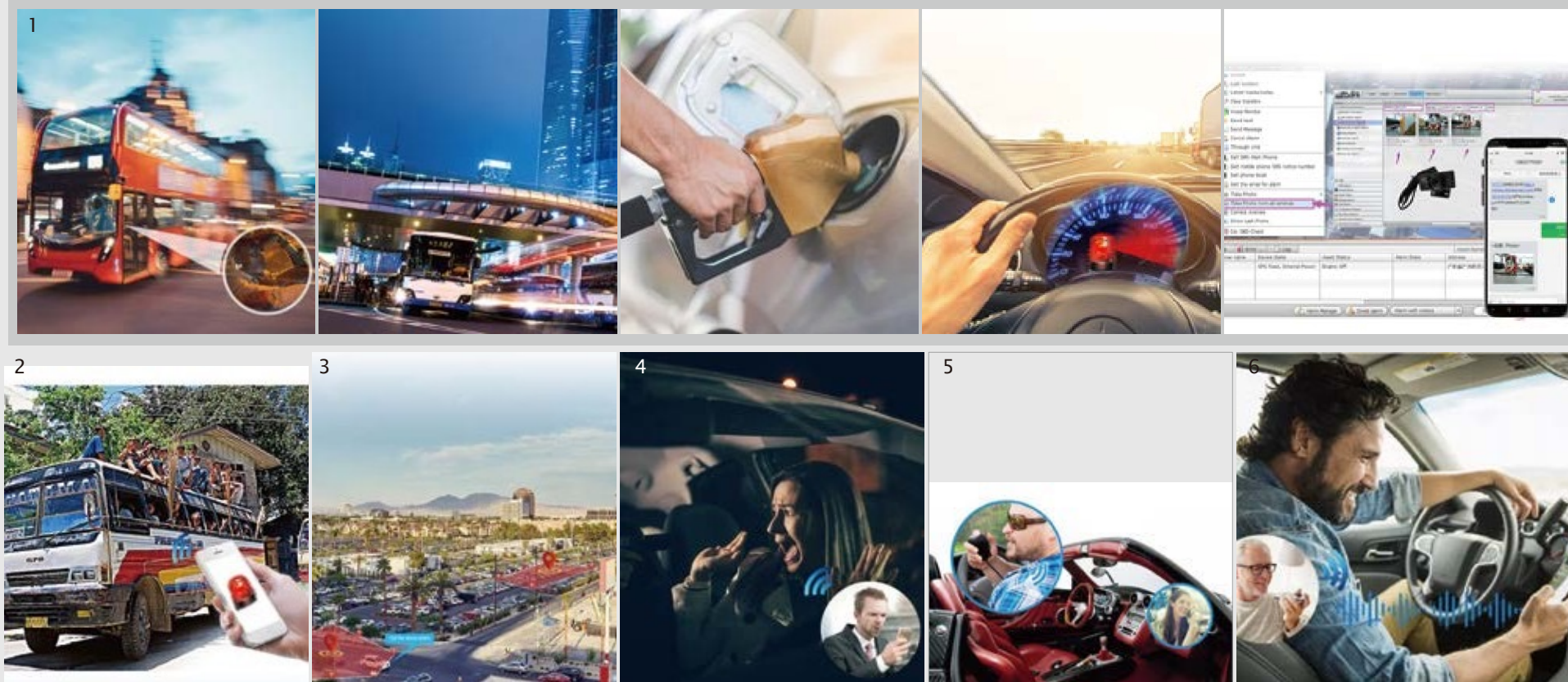
## Public Ride Solutions »

Features of public vehicle transportation:



1. Driver behavior monitoring
2. Safety of driver and passengers
3. Excellent service

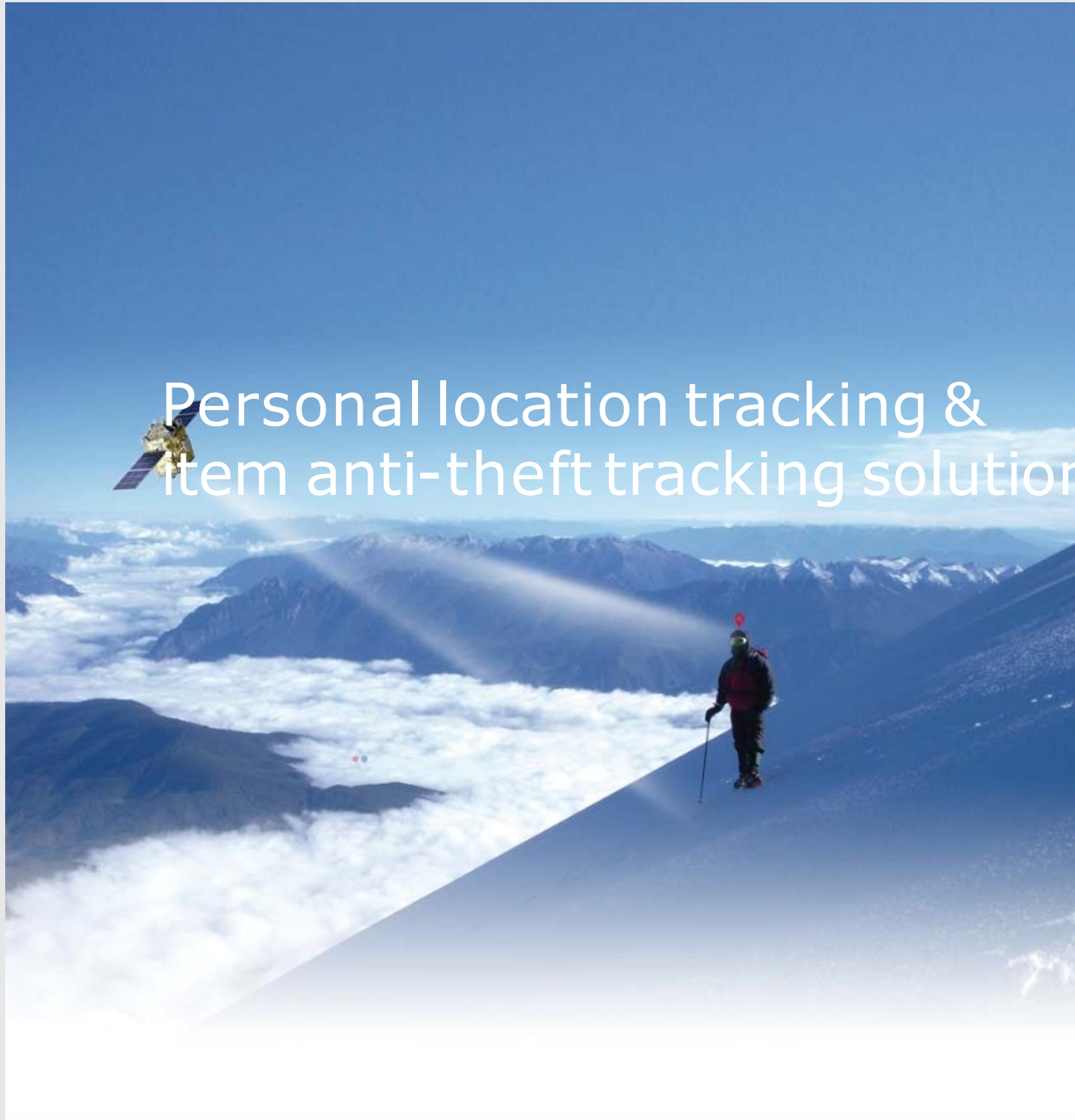




1. Monitor fatigue driving, fuel consumption, etc.
2. Fuel level remote monitor
3. Overload monitoring, multi-geo fences.
4. SOS emergency call for help, two-way talking.
5. Provide wifi, voice reminder.

Optional solution for you

<p><b>Fuel Level Sensor</b></p>	
	<p><b>GPS Tracker</b></p>
<p><b>Ultrasonic Fuel Sensor</b></p>	



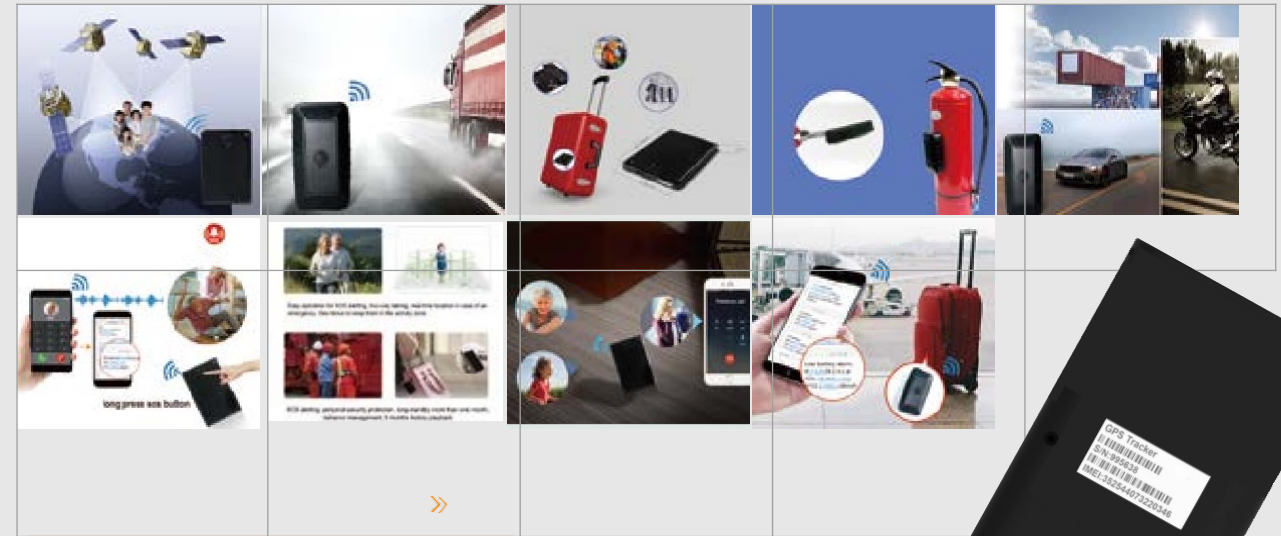
# Personal location tracking & item anti-theft tracking solution



## Core problems and pain points?

Battery standby time is short! Positioning time is too slow!

- ◆ Super power saving mode, power consumption "20uA, standby can be used for several months to several years.
- ◆ Using intelligent AGPS, extremely fast positioning.
- ◆ 4 different working methods, suitable for different applications.
- ◆ Card-like design, very thin, can be put in a wallet, easy to carry.
- ◆ Two-way conversation function.
- ◆ Key for emergency help, remote secret monitoring.



# THANKS

## Shen Zhen Jin Xin Yun Da Technology Co,.LTD

Address :Room 602, Fuji Building, No. 1008 Buji Road,  
Luohu District, Shenzhen, Guangdong

Contact Person: Nancy

Whatsapp(whatsapp):+86-15925646869